



Porta Novoslido REI 120 ad un'anta.
Novoslido one leaf.

Portone scorrevole tagliafuoco NOVOSLIDE REI 120

Usato per chiudere compartimentazioni industriali, per vani di elevata metratura (oltre 50 mq). L'ispezionabilità delle parti in movimento agevola notevolmente le operazioni di manutenzione periodica, obbligatoria per legge. Fornito con certificato a norma di Legge.

Caratteristiche tecniche:

- Costruito con moduli complanari in acciaio isolato internamente con pacco coibente ad alta densità.
 - Fornito di guida di scorrimento superiore, carter protettivo, montante di battuta, labirinti parafiamma, ammortizzatori fine corsa e freno corsa.
 - Senza guida a pavimento, la perpendicolarità è mantenuta da un rullo inferiore di guida.
 - Funzionamento mediante dispositivo di autochiusura con contrappeso, azionato da fusibile termico. A richiesta con elettromagneti da collegare al dispositivo centrale di rilevazione incendi.
 - Tipologie disponibili: scorrevole orizzontale ad una o due ante contrapposte, con più ante a sormonto (fino ad un massimo di 4 ante). Per collocazioni speciali, è possibile realizzare una versione con scorrimento verticale (porta saliscendi).
- Possibile inserimento di porta pedonale come uscita di sicurezza.
Varianti possibili: verniciatura RAL o parti in vista in acciaio inox.



Porta Novoslido REI 120 a due ante a sormonto da un lato.
Novoslido two leaves on one side.

Fire proof sliding door NOVOSLIDE REI 120



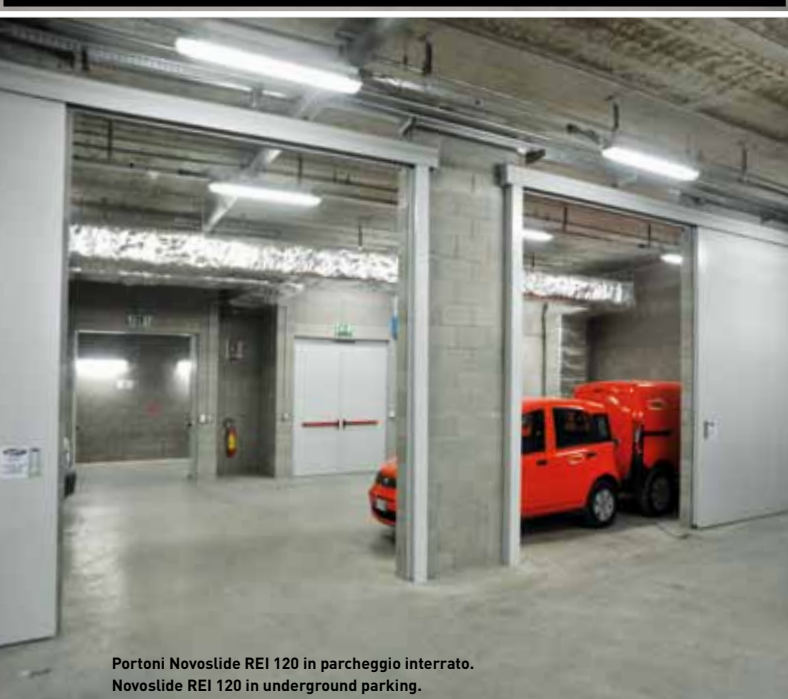
Used to close industrial buildings, for big wall openings (over 50 mq). The particular construction allows easy inspection of all mechanism according to periodic maintenance requested by Law. Supplied with certification.

Technical details:

- Constituted by modular steel panels isolated with high density material inside.
 - Supplied with upper strike beam, hoisting rail with covering, flame labyrinths, final shock absorbers, speed brake.
 - No floor guide, the alignment is maintained by a bottom wheel not visible.
 - Self closing device thought counterweight, driven by a thermal fuse.
- On request the sliding door can be connected to the centralized smoke and temperature system.

Available models: horizontal sliding one or more leaves, more leaves sliding on same side (maximum 4 leaves). In particular situation available vertical sliding door.

- Possible pass door inside (as exit door).
- Finishing with painting in Ral colors or stainless steel realization.

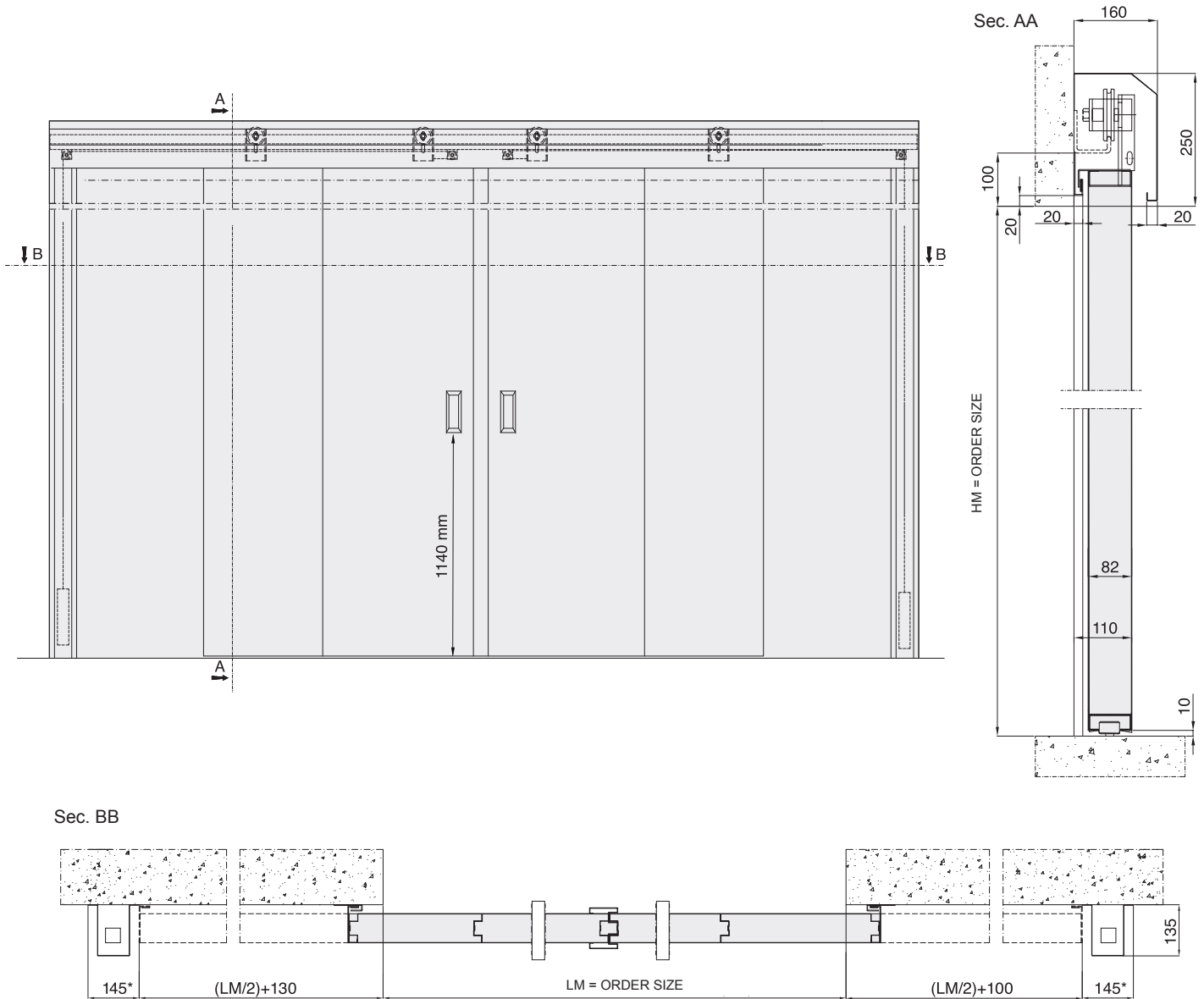


Portoni Novoslido REI 120 in parcheggio interrato.
Novoslido REI 120 in underground parking.



Porta Novoslido REI 120 a due ante a sormonto con pedonale dotata di dispositivo antipánico.
Novoslido two leaves on one side, integrated pass door with panic device.

NOVOSLIDE REI 120, sliding door 2 leaves



*Sliding door size $HM > LM$. In case $HM < LM$, encumbrance of counterweight compartment can achieve 440 mm.

Fire proof sliding door 2 leaves, certified according to UNI 9723

- Modular panels realized in galvanised, prepainted and welded steel sheet, with high density insulating package inside.
- Upper strike beam equipped with guide and counterweight, which ensures closure in case of fire.
- Smoke and flame labyrinth on the perimeter of the leaf.
- Upper hoisting rail, low friction, complete of special supports to mount on architrave in reinforced concrete, metallic cover inspectable.
- Thermo-expanding gasket all around the door.
- Fixed handles for the opening.
- No floor guide, the alignment is maintained by a bottom wheel not visible. The sliding is sweet thanks to wheels with curve, mounted on double bearing.
- The particular construction method allows easy inspection of all mechanism.
- Normally equipped with self-closing device through counterweight, driven by a thermal fuse (rated at 68 ° C).
- Superficial finish with primer colour RAL 7035 (brushed).
- Equipped with a final or continuous shock absorber according necessity.